

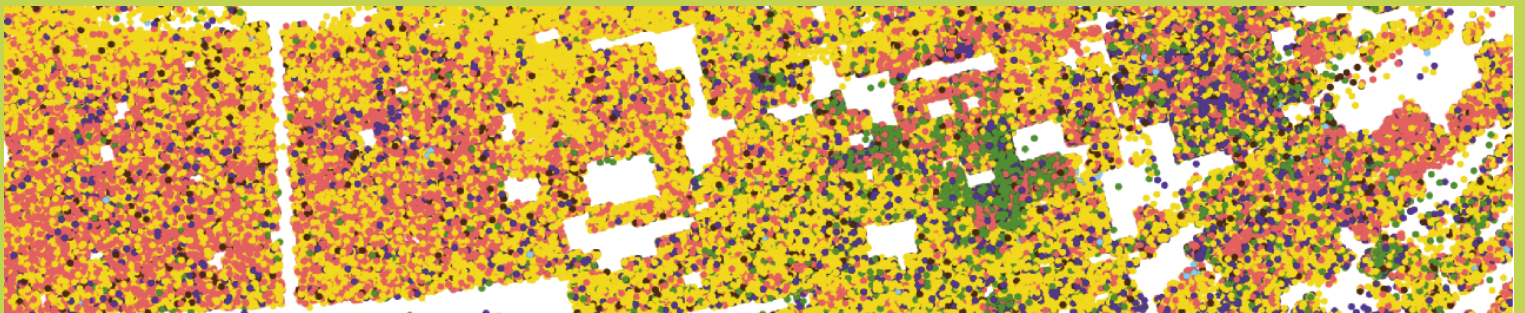
Mapping racial composition in the United States with high resolution data



Population and subpopulation grids



Racial diversity grids



Racial dot map

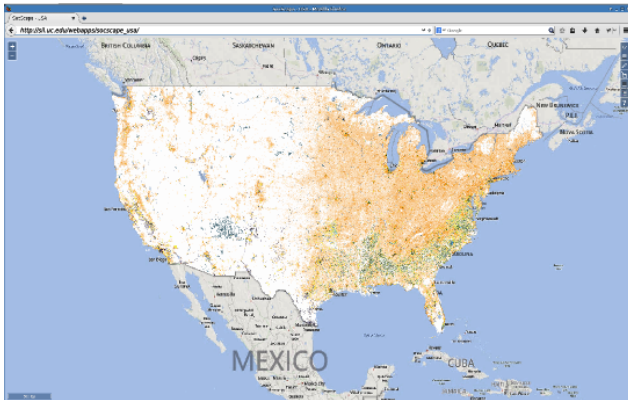


Racial change map

SocScape - resources of data

SocScape - GeoWeb application for exploring and detecting change of population density and racial diversity over the entire U.S.

(<http://sil.uc.edu/cms/index.php?id=socscape-data>)



Data availability:

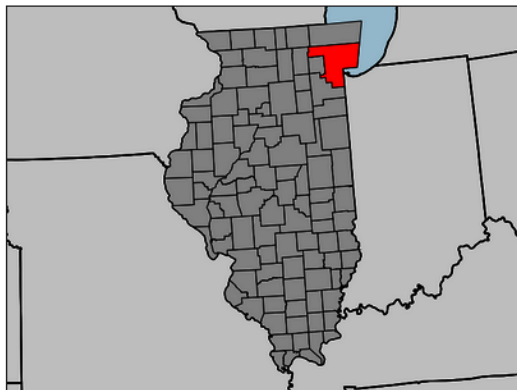
Population density and racial diversity grids are available for 1990, 2000, 2010 as multiyear comparable datasets.

Data can be downloaded for selected region of the area up to 100 000 km².

SocScape data - downloading data for counties and metropolitan areas

(<http://sil.uc.edu/cms/index.php?id=socscape-data>)

Illinois



Data availability:

- Population, subpopulation, racial diversity grids are available for MSA and counties for 1990, 2000 and 2010
- Racial dot maps are available only for counties in 2010
- Racial diversity change maps are available for urban area within MSA.

More information

A.Dmowska, T.F. Stepinski, P. Netzel (2017) Comprehensive framework for visualizing and analyzing spatio-temporal dynamics of racial diversity in the entire United States.

PLoS ONE 12(3): e0174993. doi:10.1371/journal.pone.0174993